

# Forecast: capacity and demand along the Rhine corridor

## Who contributes data?

- Shippers
- Logistic Service Providers
- etc.

## Who sees results?

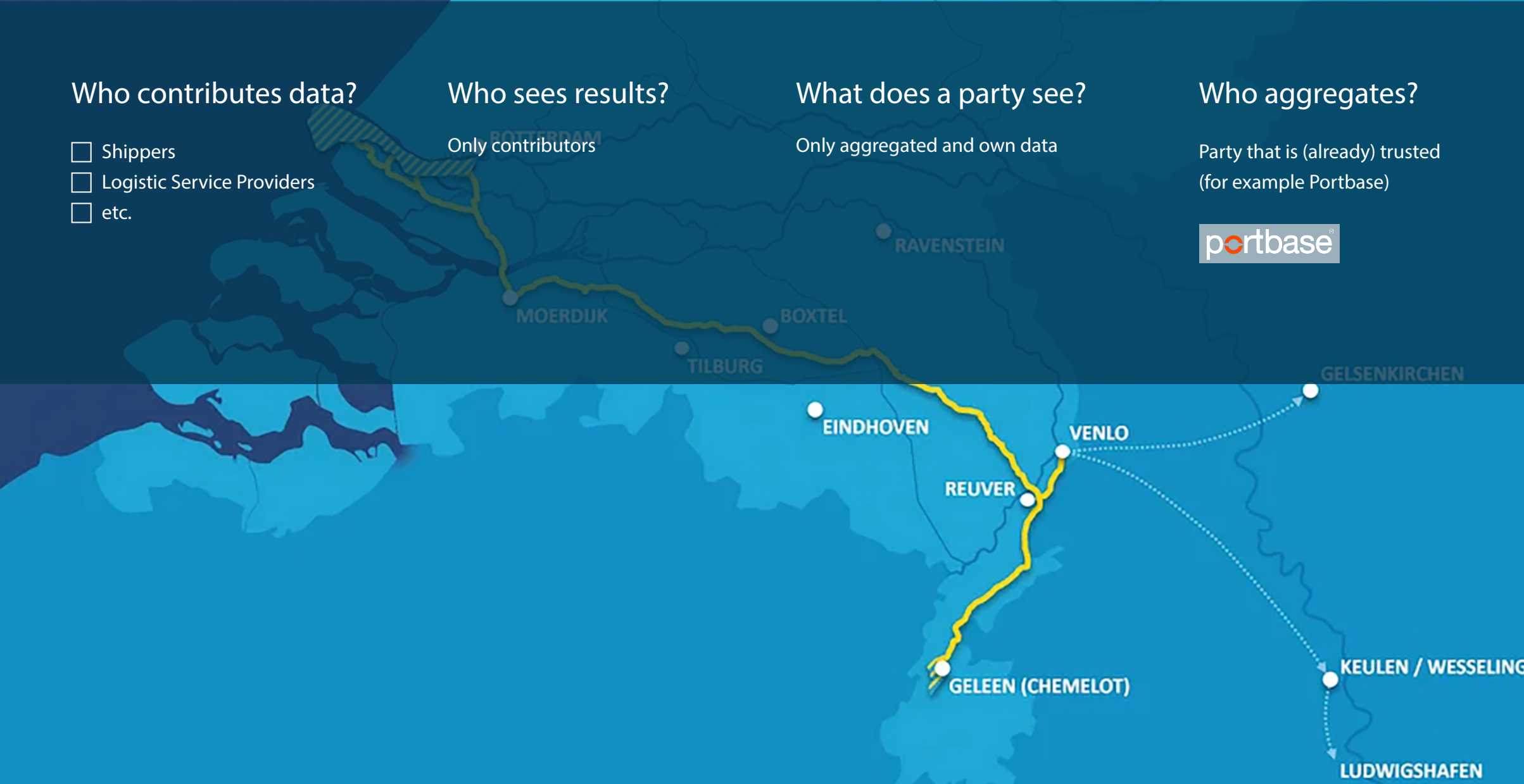
Only contributors

## What does a party see?

Only aggregated and own data

## Who aggregates?


Party that is (already) trusted  
(for example Portbase)

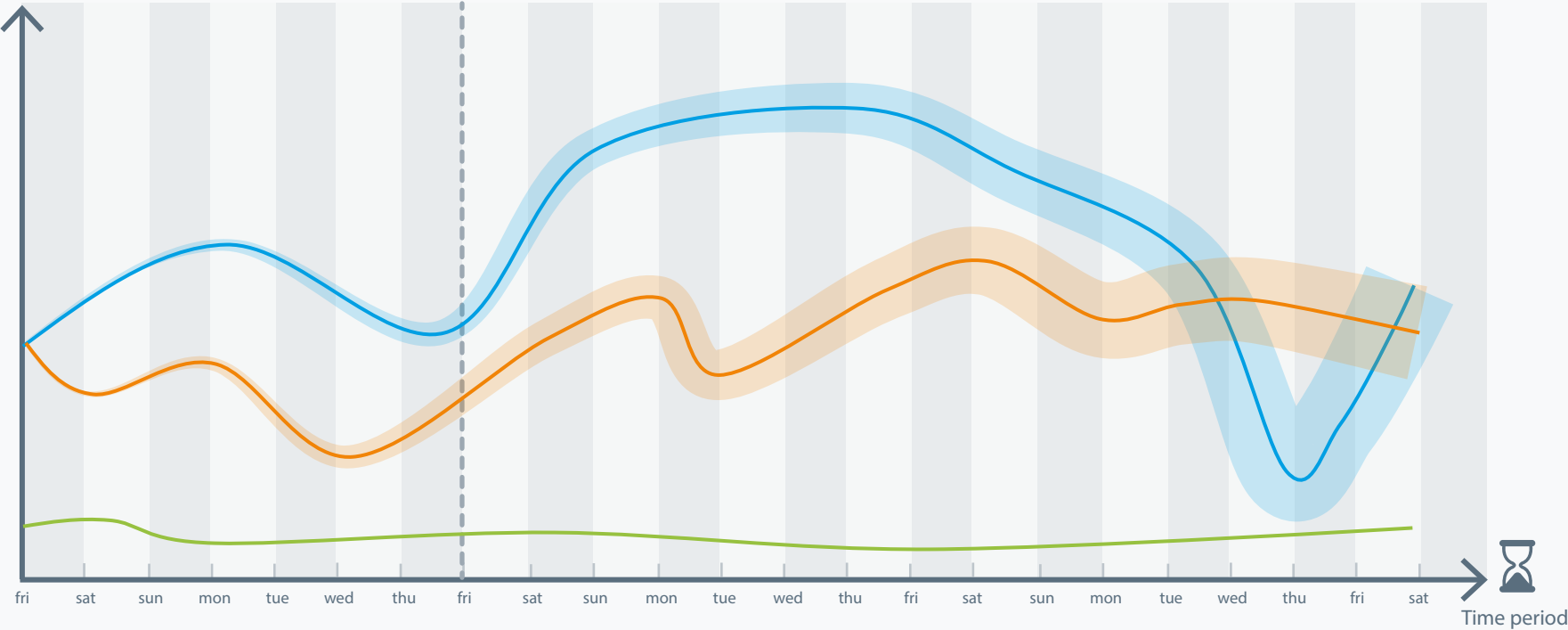


# Forecast: capacity and demand along the Rhine corridor

Freight weight (Mtonnes)

01-03  
Today

Dry bulk   
> 1.000 km  
Rotterdam Harbour - Basel



- Transport capacity (aggregated)
- Need for transport (aggregated)
- Need for transport (own)
- 50% band
- 50% band

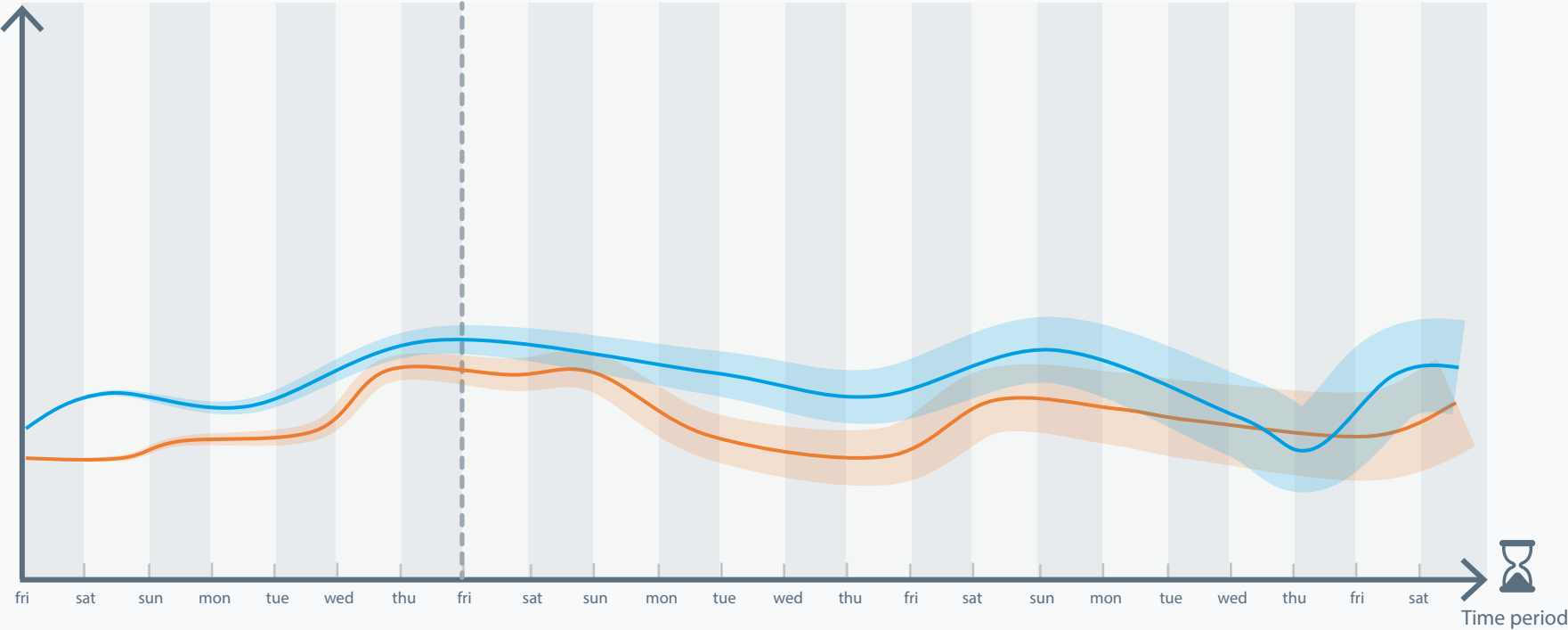
- FREIGHT SEGMENT
  - Liquid bulk
  - Dry bulk**
  - Perishables
  - Non-Perishables
  - Industrial goods
- INLAND DISTANCE IN KM
  - > 1.000 km
- LOCATION/DESTINATION
  - Basel

# Forecast: capacity and demand along the Rhine corridor

Freight weight (Mtonnes)

01-03  
Today

Liquid bulk   
150-300 km  
Rotterdam Harbour - Duisburg



- Transport capacity (aggregated)
- Need for transport (aggregated)
- Need for transport (own)
- 50% band
- 50% band

- FREIGHT SEGMENT
  - Liquid bulk
  - Dry bulk
  - Perishables
  - Non-Perishables
  - Industrial goods
- INLAND DISTANCE IN KM
  - 150-300 km
- LOCATION/DESTINATION
  - Duisburg